

Door Armor Lock Side Single Side Light Door

Jamb Shield



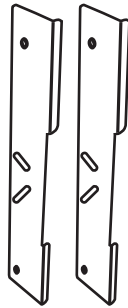
A

Mini Door Shields

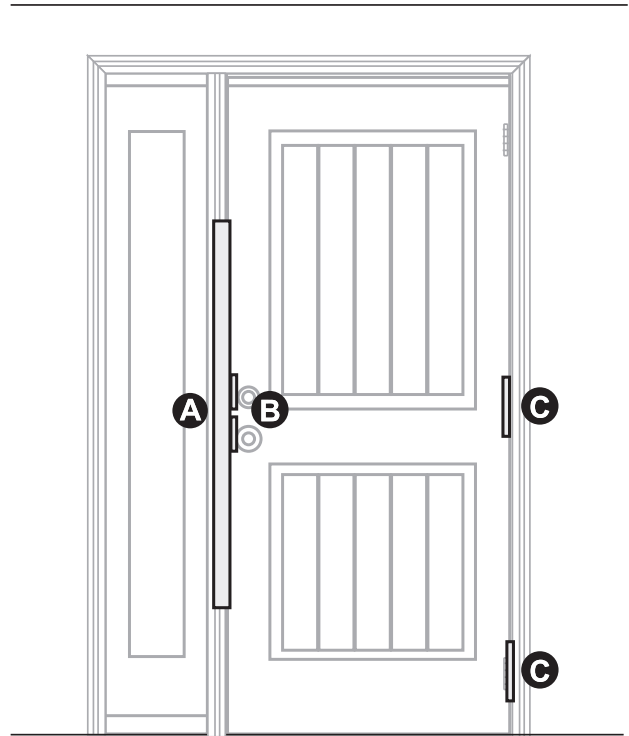


B

Hinge Shield



C



Sidelight Door slab Trim Hinge

Door Jamb Lock side

Trim

Door Jamb Hinge side

Trim

D



2-1/2" screw (12) (painted head)

E



3-1/2" screw (12) (painted head)

*extra screws may be included in kit



Questions? Call customer service at 1-888-582-2295 or visit www.armorconcepts.com



SAFETY INFORMATION

WARNING

- The use of work gloves and safety glasses is strongly recommended while installing this product. Wood and metal shaving/splinters can cause serious bodily injury.

- As with all products requiring installation, to reduce the possibility of accidental injury to you or others

FOLLOW ALL INSTALLATION INSTRUCTIONS contained herein accurately and carefully.

PREPARATION

Before beginning assembly of product, make sure all parts are present. Compare parts with package contents list and diagram above. If any part is missing or damaged, do not attempt to assemble the product. Contact customer service for replacement parts at 1-888-582-2295 or visit www.armorconcepts.com.

PAINTING INSTRUCTIONS

Note: It is recommended that Door Armor components be painted before being installed. They can be touched up as necessary after installation.

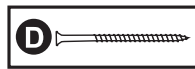
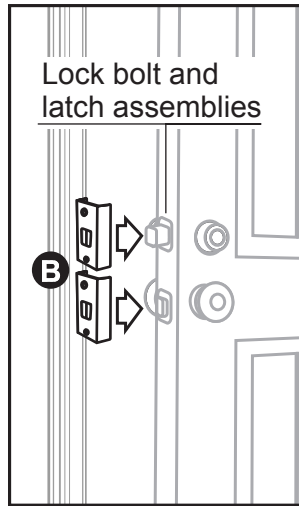
1. Using plain steel wool or a very fine emery cloth, gently rough the surface of the piece to be painted. You only want to rough the surface and break the gloss so that your paint will adhere to the surface. Do not totally remove the existing powder coating.
2. Clean the surface with a tack cloth or a cloth with a cleaner on it that will not leave a residue. Rubbing alcohol will work well for this application. You can also use mineral spirits but make sure that whatever you use does not cause an adverse reaction with the powder coating.
3. When components are clean and free of debris, you are ready to paint your pieces.
4. Ensure that all components are completely dry before handling or installing them.

Tools required for assembly

- Variable speed drill, with screwdriver adapter and bits
- Pry bar
- Flathead screwdriver
- Pair of work gloves per person assisting in installation
- Pair of safety glasses per person assisting in installation
- 11/64 inch drill bit
- Razor knife
- Caulk

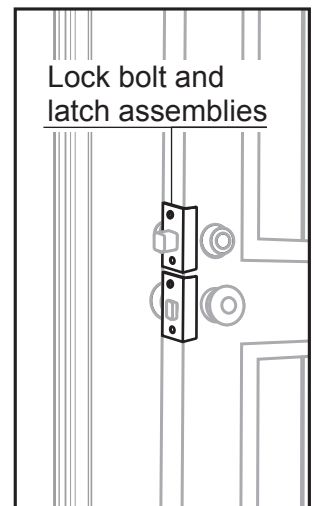
Door Shield Installation

1. Slide the Mini Door Shield **B** onto the door position so the holes will go over the lock bolts.
2. Using the supplied 2-1/2" screws **D**, secure the Door Shield to the door slab using the hole above and below screw lock bolt holes.



3. With the Door Shields in place, make sure the Door Shields are level and flush against the door slab on all sides.

4. Verify that the locks can function properly without interference from the Door Shields. If there is interference, adjust the Door Shields until the locks operate freely. If there is no interference, the installation is complete.

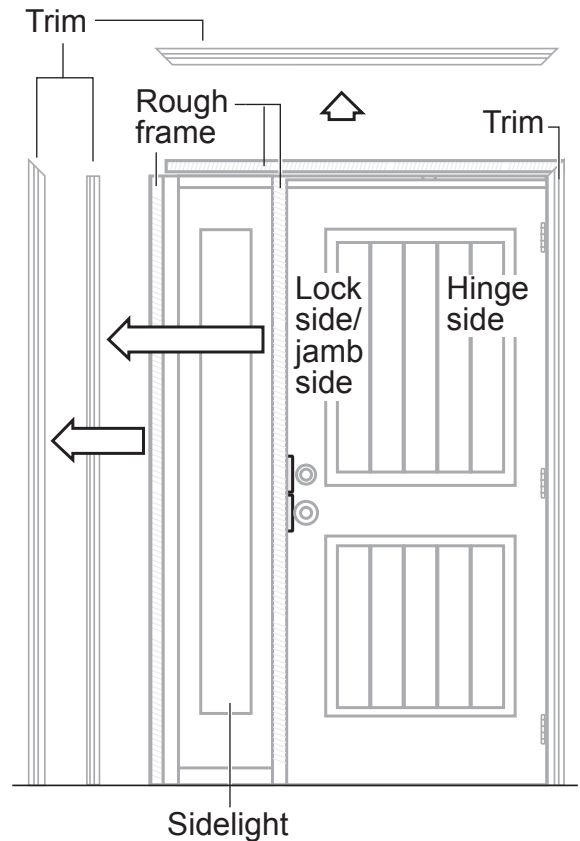
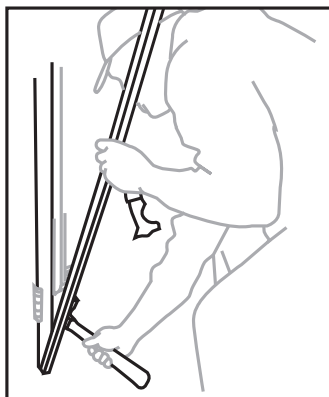


Door Jamb Prep

Note: In all steps it is imperative to ensure that at no time any drilling or screw placement come in contact with the glass casement of the sidelight.

1. Carefully score along trim edges with sharp tool such as a razor knife.
2. Gently pry and remove only the trim molding on the lockside of the sidelight panel where the door lock interfaces the door jamb, exposing the door jamb separating the door and sidelight.

(This trim can and should be reinstalled upon installation completion.)



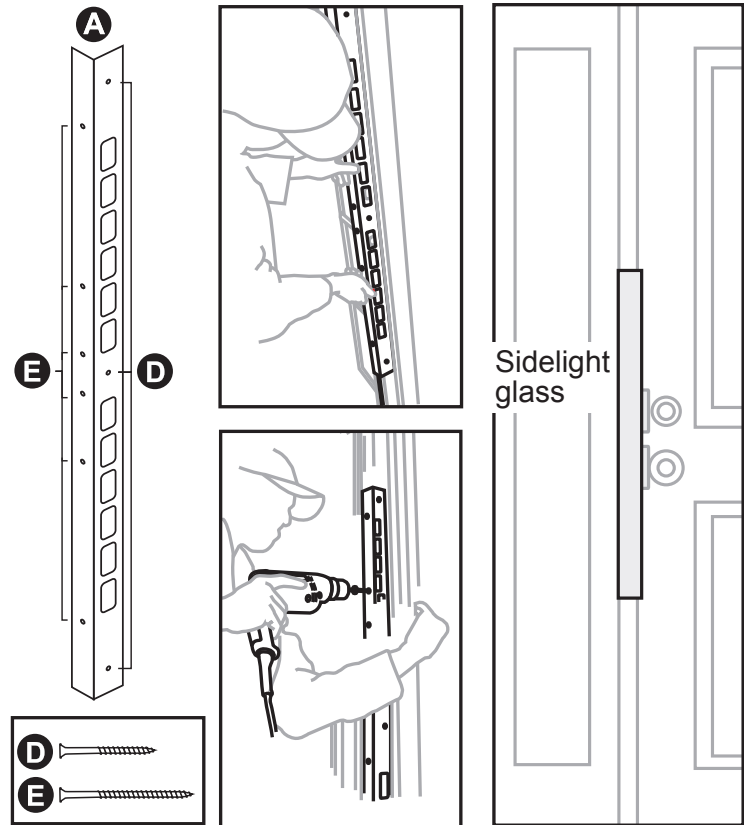
Lockside Shield

1. Locate the Jamb Shield support piece **A** with multiple cutouts along one side, (3) 2-1/2 inch **D** and (6) 3-1/2 inch **E** screws.

2. Position the piece along the center section of the lock side door jamb ensuring the lock bolt holes of the door jamb are aligned with the appropriate cutouts on the piece. With the component flush against the interior edge of the door jamb, predrill with 9/64th-inch drill bit and install the central side screw, from the door side, with the supplied 2-1/2 inch screw **D**.

Repeat for top and bottom screw holes.

⚠ Be sure to use a screw that will not come into contact with the glass of the side light.



3. Pre-drill the holes on the interior trim edge with 11/64th-inch drill bit and secure the Shield in place with the supplied 3-1/2 inch screws **E**.

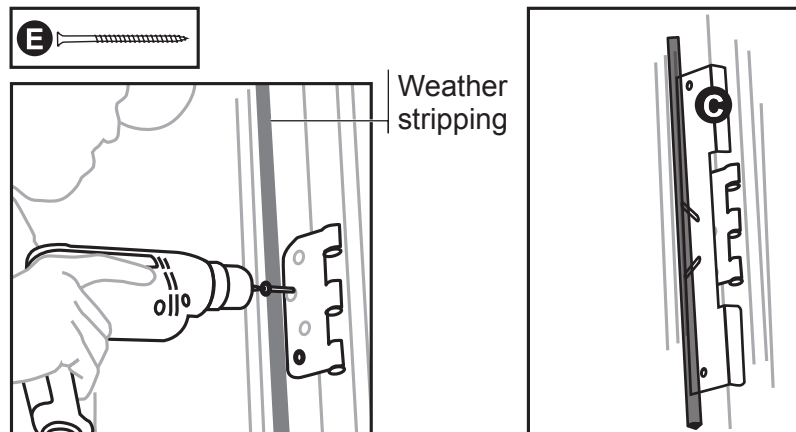
4. Clean all debris from the lock bolt holes and ensure the lock operates freely and engages smoothly into the holes of the Center Jamb Shield and door jamb.

Hinge Shield Installation

1. With the door open, remove the two screws from the upper hinge plate, closest to the weatherstripping. Pre-drill these holes with the 11/64-inch drill bit. Now drive a 3-1/2 inch screw **E** into each of these holes, ensuring the screw heads come to rest flush the hinge plate.

2. Position the Hinge Shield **C** around the upper hinge plate so that the longer leg will go between the door jamb and the door. The short leg will go on the inside edge of the jamb allowing the upper and lower portions of the leg to straddle the hinge.

On the inside of the door jamb, the longer leg of the Hinge Shield should fit securely against the door jamb and behind the weather stripping. When



placed properly, the edge of the longer leg should be hidden by the weather stripping.

It may be necessary to slightly raise the edge of the trim molding to allow proper positioning.

NOTE: Above, door is removed for illustrative purposes only. Application of Hinge Shield should not require removal of door.

3. Hold the Hinge Shield **C** in position and pre-drill the holes for the Hinge Shield as laid out on the diagram with an 11/64 in. drill bit. Be sure to drill through the finished frame and at least 1 inch into the rough frame. The supplied securing screws are over 3 inches long so pre-drilling should be deep enough to accommodate this length.

4. Secure the door jamb with the Hinge Shield attached to the rough frame with the supplied 3-1/2 inch screws **E**. Drive screws until the heads seat flush against the door jamb.

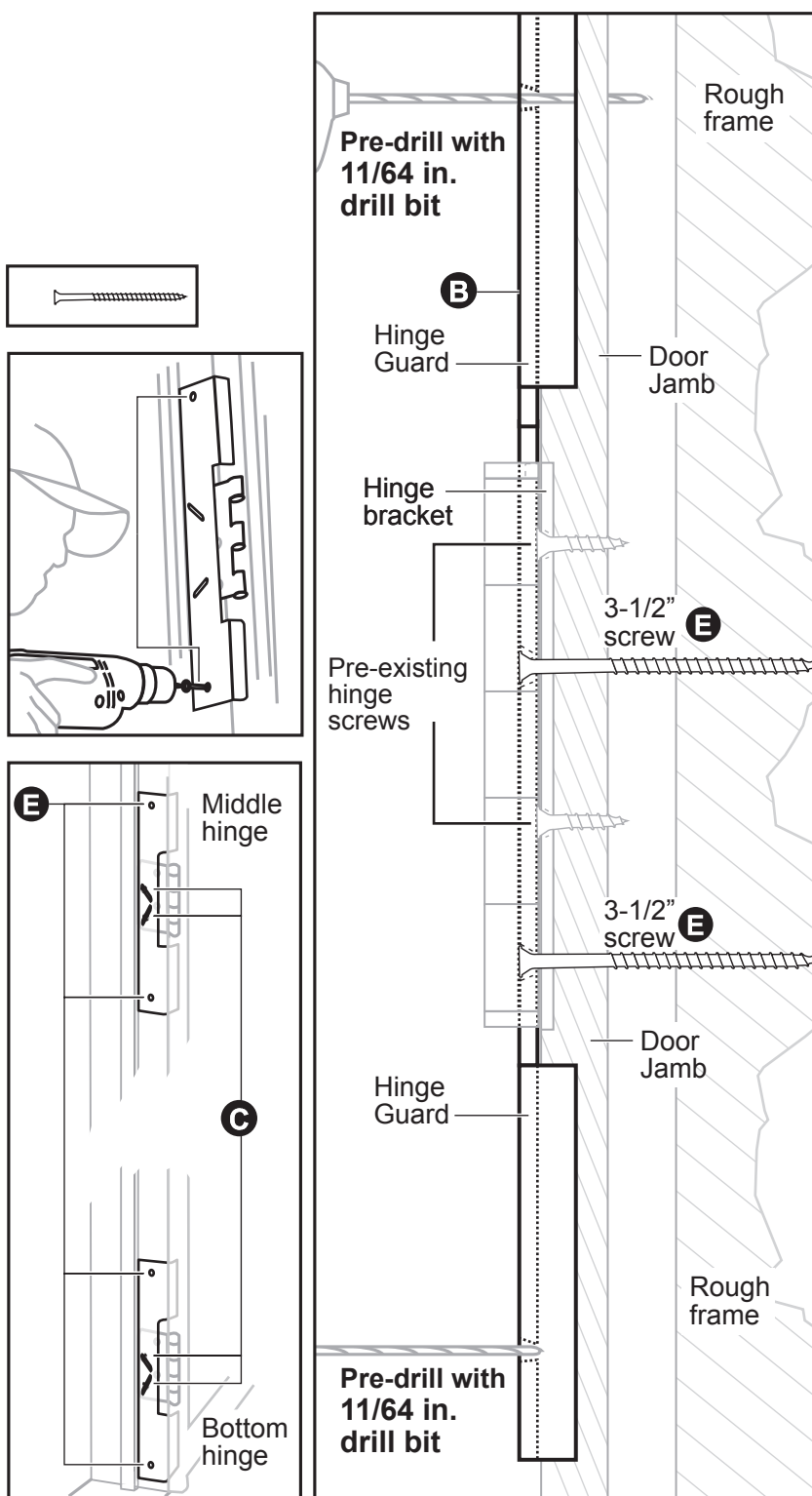
NOTE: Take care not to over tighten the screws as this may cause unwanted jamb displacement.

5. Check to verify the door and door jamb are still true. If the door is not true, take all necessary steps to correct this issue before proceeding.

6. Once the door is true, secure the second Hinge Shield as detailed in **step 4**.

7. Repeat steps 1-4 for the bottom hinge with the second Hinge Shield.

8. Once installation of Hinge Shields is complete, verify that the door is true and operates correctly.



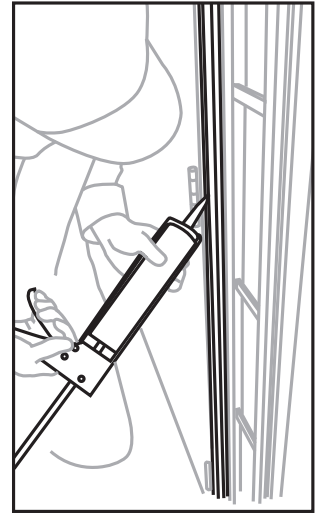
NOTE: Above, the hinge screws are visible only for illustrative purposes. These will not be visible as they will be covered by the Hinge Shield.

Finishing

1. Once installation is complete verify the door is true and operates correctly. If not take the necessary steps to ensure proper operation and then proceed.

2. Install the interior trim molding and caulk as necessary.

This completes the installation of the Door Armor Lock Side Single Side Light Door hardware.



Armor Concepts has products for most style doors
For more products and information, contact Armor Concepts
Call customer service at 1-888-582-2295 or visit www.armorconcepts.com



Door Armor

Ultimate Door Security

Armor Concepts LLC * (888) 582-2295