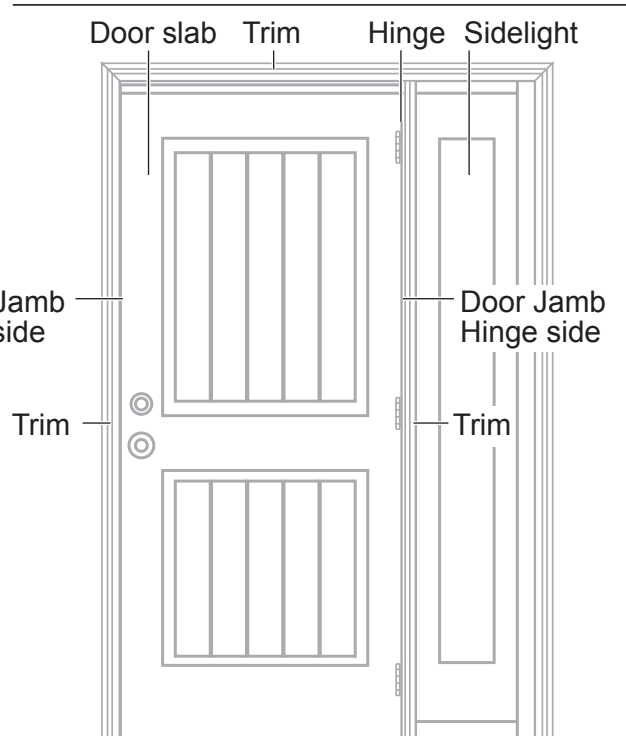
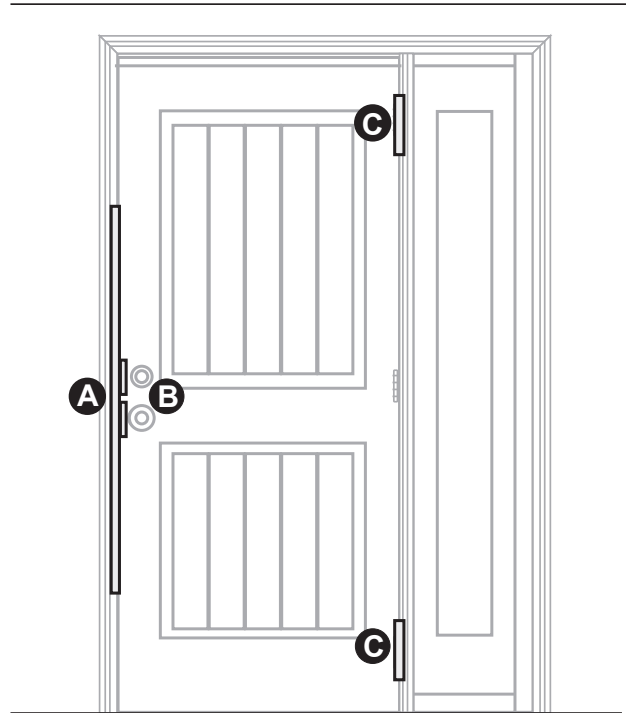
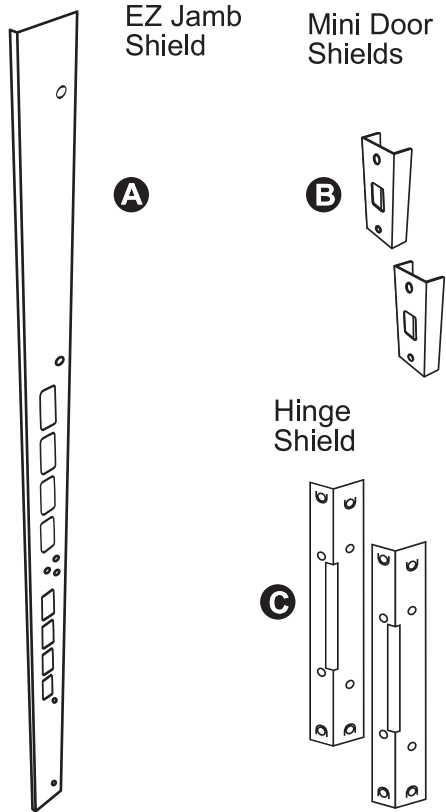
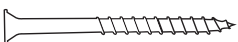



Door Armor Hinge Side Single Side Light Door



D  2-1/2" screw (12) (painted head)

E  3-1/2" screw (15) (painted head)
(Extra screws may be included)



Questions? Call customer service at 1-888-582-2295 or visit www.armorconcepts.com



SAFETY INFORMATION

WARNING

• The use of work gloves and safety glasses is strongly recommended while installing this product. Wood and metal shaving/splinters can cause serious bodily injury.

• As with all products requiring installation, to reduce the possibility of accidental injury to you or others

FOLLOW ALL INSTALLATION INSTRUCTIONS contained herein accurately and carefully.

PREPARATION

Before beginning assembly of product, make sure all parts are present. Compare parts with package contents list and diagram above. If any part is missing or damaged, do not attempt to assemble the product. Contact customer service for replacement parts at 1-888-582-2295 or visit www.armorconcepts.com.

PAINTING INSTRUCTIONS

Note: It is recommended that Door Armor components be painted before being installed. They can be touched up as necessary after installation.

1. Using plain steel wool or a very fine emery cloth, gently rough the surface of the piece to be painted. You only want to rough the surface and break the gloss so that your paint will adhere to the surface. Do not totally remove the existing powder coating.
2. Clean the surface with a tack cloth or a cloth with a cleaner on it that will not leave a residue. Rubbing alcohol will work well for this application. You can also use mineral spirits but make sure that whatever you use does not cause an adverse reaction with the powder coating.
3. When components are clean and free of debris, you are ready to paint your pieces.
4. Ensure that all components are completely dry before handling or installing them.

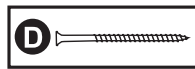
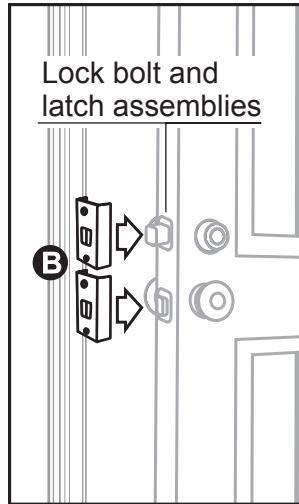
Tools required for assembly

- Variable speed drill, with screwdriver adapter and bits
- Pry bar
- Claw foot hammer
- Phillips screwdriver
- Flathead screwdriver
- Pair of work gloves per person assisting in installation
- Pair of safety glasses per person assisting in installation
- 11/64 inch drill bits
- Razor knife
- Caulk

Door Shield Installation

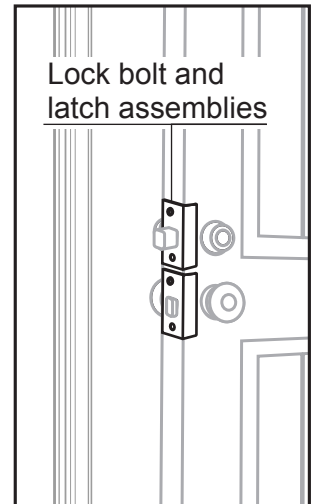
1. Slide the Mini Door Shield **B** onto the door position so the holes will go over the lock bolts.

2. Using the supplied 2-1/2" screws **D**, secure the Door Shield to the door slab using the hole above and below screw lock bolt holes.



3. With the Door Shields in place, make sure the Door Shields are level and flush against the door slab on all sides.

4. Verify that the locks can function properly without interference from the Door Shields. If there is interference, adjust the Door Shields until the locks operate freely. If there is no interference, the installation is complete.



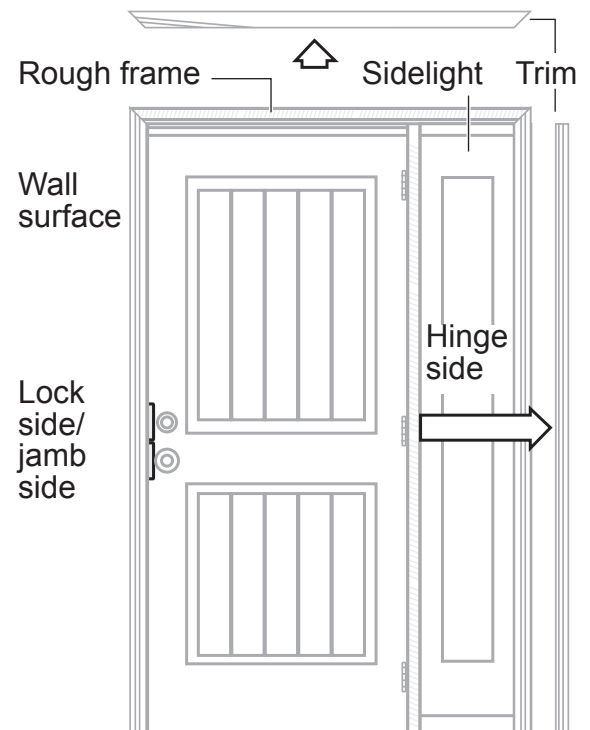
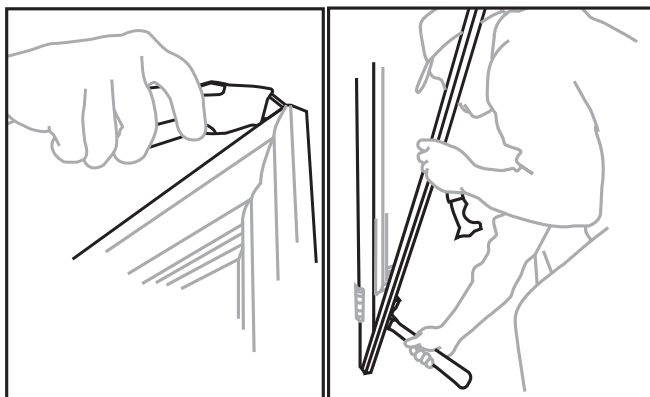
Door Jamb Prep

Note: In all steps it is imperative to ensure that at no time any drilling or screw placement come in contact with the glass casement of the sidelight.

1. Carefully score along trim edges with sharp tool such as a razor knife.

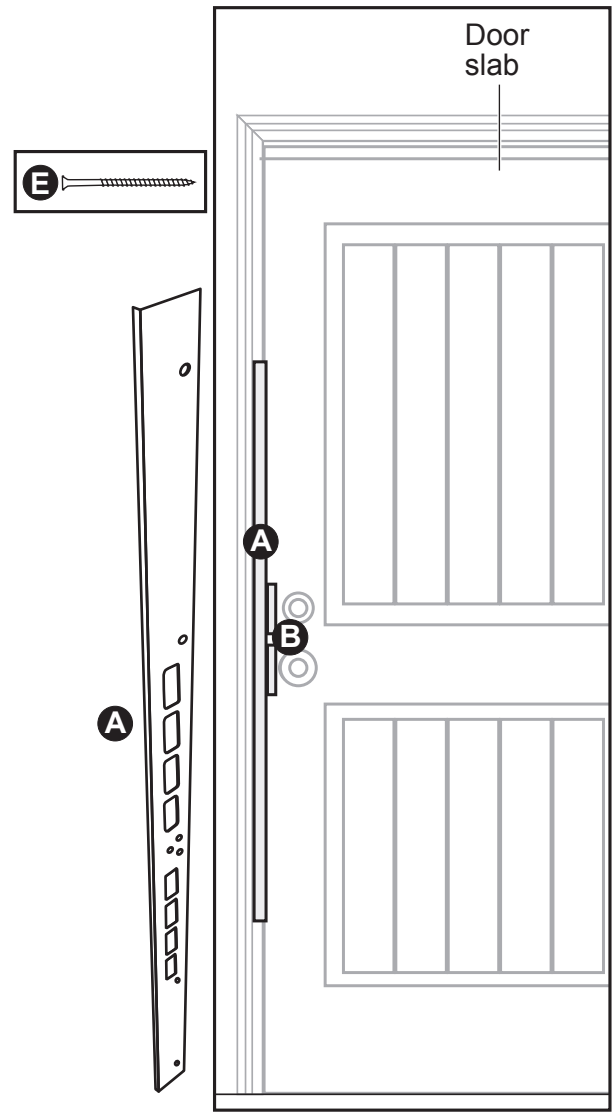
2. Gently pry and remove only the trim molding on the sidelight panel where the hinges attach to the door jamb exposing the door jamb separating the door and sidelight

(This trim can and should be reinstalled upon installation completion.)



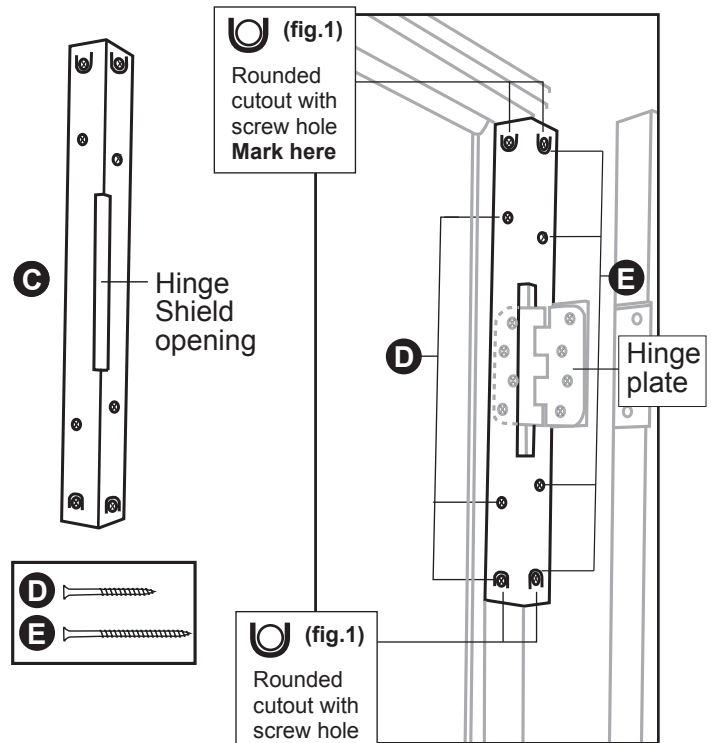
Jamb Shield Installation

1. Locate the Jamb Shield support piece **A** with cutouts along one side and (7) 3-1/2 inch screws **E**.
2. Position the Jamb Shield on the jamb securely against the finished frame and behind the weather stripping. When positioning the Jamb Shield, care should be taken to ensure that Jamb Shield holes lines up with the bolt lock holes in the door jamb. The component should fit flush against the finished frame on the interior edge of the door jamb with the long leg placed under the weather stripping.
3. Pre-drill Jamb Shield holes with the 11/64th-inch drill bit as laid out on the diagram. When predrilling holes, be sure to drill through the door jamb and at least 1 inch into the rough frame. The predrilled holes should be deep enough to accommodate the supplied 3-1/2 inch screws **E**.
4. Check to verify that the door and door jamb are still true. If the door is not true, take all necessary steps to correct this before proceeding.
5. Once the door is true, secure the Jamb Shield to the rough frame with the supplied 3-1/2 inch screws **E**. Drive screws until the heads sit flush against the frame.



Hinge Shield

1. Locate the Hinge Shield support **C** (4) 2-1/2" **D** and (4) 3-1/2" **E** screws.
2. Remove the screws attaching the hinge to the door. Save these screws as they will be needed to reattach the hinge to the door.
3. With the door hinge plate free,



maneuver the support between the door and the jamb so that the unsecured hinge plate goes through the opening in the support.

4. There are four (4) rounded cutouts (fig. 1) with the screw holes in their center that will be located on the inside edge (2) and door side (2) of the support piece. The upper tabs will be positioned so as to attain maximum penetration into the upper rough frame.

5. Hold the piece in position on the jamb. Ensure the door side edge of the support slides behind the weather stripping. Once the support piece is positioned properly, mark the center of the rounded cutout of the upper tabs on the door jamb (fig. 1).

6. Remove shield and with a 1/2-inch drill bit, drill 1/2-inch holes approximately 1/2-inch deep into the jamb at the marked locations.

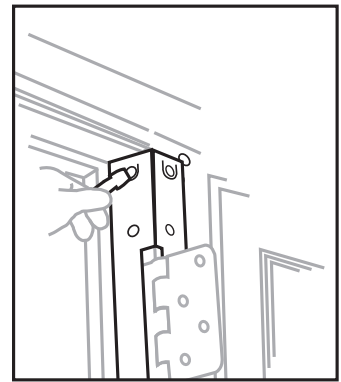
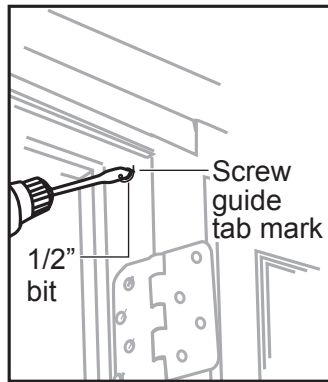
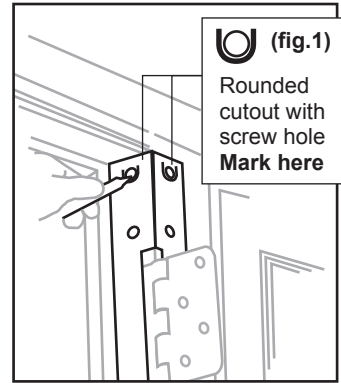
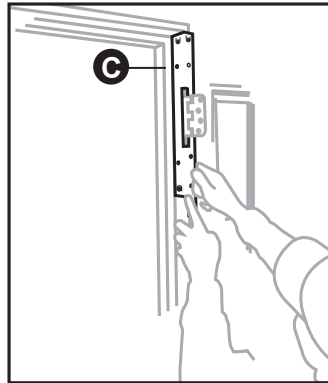
7. Remove the two screws from the upper jamb side hinge plate, closest to the weatherstripping. Pre-drill these holes with the 11/64-inch drill bit. Now drive a 2-1/2 inch screw into each of these holes, ensuring the screw heads come to rest flush the hinge plate.

8. Re-install the support piece and ensure it is located so the circular tab is positioned over the previously drilled hole and the piece is still properly positioned, as detailed in step 5. (If there is difficulty due to hole misalignment, enlarge the hole slightly to accommodate the bending of the tab)

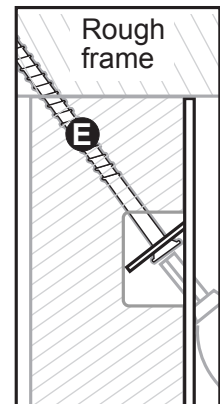
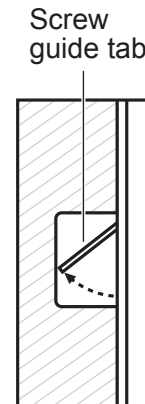
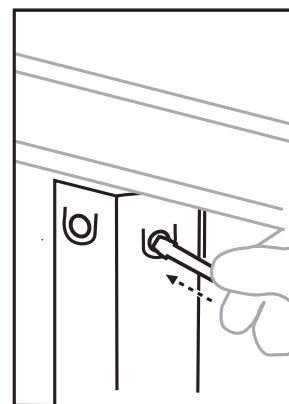
9. With a pin punch or other appropriate blunt instrument and hammer, tap the cutout tab so that it bends into the predrilled 1/2-inch hole.

The upper tab should be positioned so that when the screw is installed, maximum penetration into the upper rough frame can be realized.

10. Pre-drill the hole in the upper tab ensuring the drill bit goes on an upward angle through the vertical door jamb, upper horizontal jamb and as far as possible into the upper rough frame.



NOTE: Above, door is removed for illustrative purposes only. Application or hinge shield should not require removal of door.



Then secure the upper tab with the supplied 3-1/2 inch screw **E**.

11. Pre-drill with 11/64th-inch drill bit and install all other screws as detailed.

⚠ Be sure to use a screw that will not come into contact with the glass of the side light.

12. Reattach the hinge to the door with the previously removed screws.

Hinge Shield

1. Locate the second Hinge Shield support **C**, (4) 2-1/2" **D** and (4) 3-1/2" **E** screws.

2. Remove the screws attaching the lower hinge to the door. Save these screws as they will be needed to reattach the hinge to the door.

3. With the door hinge plate free, maneuver the support between the door and the jamb so that the unsecured hinge plate goes through the opening in the support.

4. There are four (4) rounded cutouts (**fig. 1**) with the screw holes in their center that will be located on the inside edge (2) and door side (2) of the support piece. The lower tabs will be positioned so as to attain maximum penetration into the floor.

5. Hold the piece in position on the jamb. Ensure the door side edge of the support slides behind the weather stripping.

Once the support piece is positioned properly, mark the center of the rounded cutout of the lower tabs on the door jamb (**fig. 1**).

6. Remove shield and with a 1/2-inch drill bit, drill 1/2-inch holes approximately 1/2-inch deep into the jamb at the marked locations.

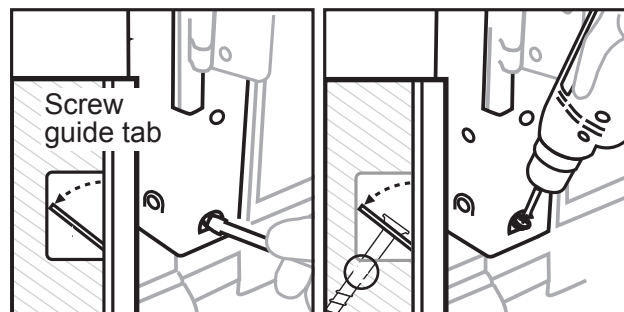
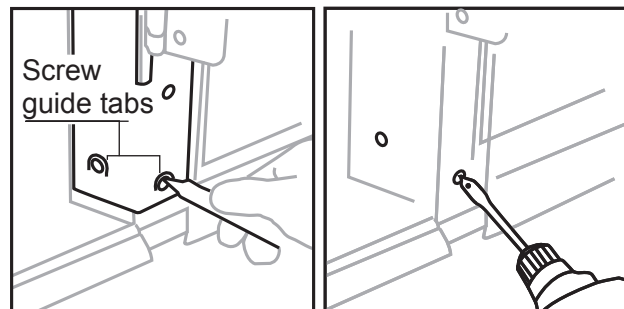
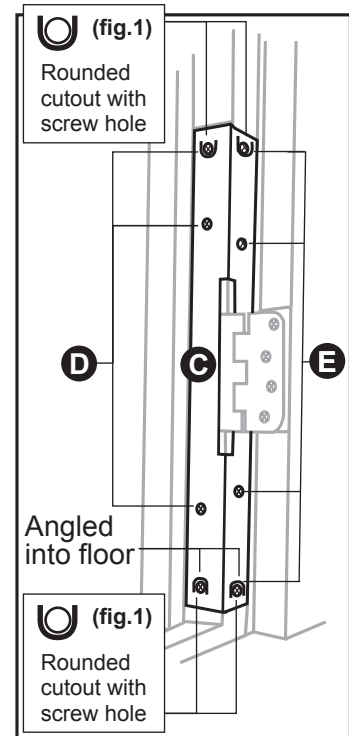
7. Remove the two screws from the lower jamb side hinge plate, closest to the weatherstripping. Pre-drill these holes with the 9/64-inch drill bit. Now drive a 2-1/2 inch screw **D** into each of these holes, ensuring the screw heads come to rest flush the hinge plate.

8. As with the previous Hinge Shield, repeat the re-install, align and punching of the circular tabs.

Angle the lower tabs to obtain maximum penetration into the sill plate and floor.

9. Pre-drill center holes with a 11/64th-inch drill bit in the lower tabs ensuring the drill bit goes on a downward angle through the vertical door jamb, sill plate and as far as possible into the floor.

10. Secure the lower tabs with a supplied 3-1/2 inch screws **E**.



11. Pre-drill with 11/64th-inch drill bit and install all other screws as detailed.

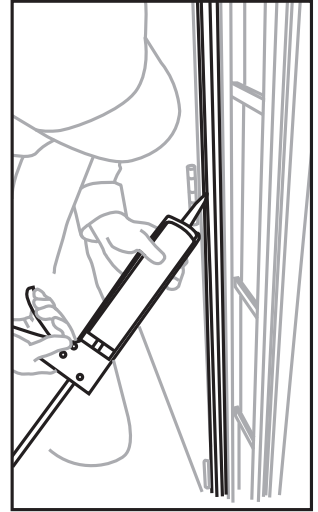
⚠ Be sure to use a screw that will not come into contact with the glass of the side light.

12. Reattach the hinge to the door with the previously removed screws.

Finishing

1. Once installation is complete verify the door is true and operates correctly. If not take the necessary steps to ensure proper operation and then proceed.
2. Install the interior trim molding and caulk as necessary.

This completes the installation of the EZ Armor Hinge Side Single Side Light Door hardware.



Armor Concepts has products for most style doors
For more products and information, contact Armor Concepts
Customer service - 888-582-2295 or visit www.armorconcepts.com



Door Armor

Ultimate Door Security
Armor Concepts LLC 888-582-2295